



Catalogue  
**Laboratory  
Glassware  
Module**



**Educational Equipment Industries**



## Laboratory Glassware Module

2

Laboratory Glassware Module

### Introduction:

Educational Equipment Industries (E.E.I) company, founded in 1974, is the biggest designer, manufacturer and supplier of educational equipment and workshops tools and devices in the Iran for all educational stages curriculums from pre-schools to universities and technical and vocational centers.

Among EEI's products the glassware is included. The glassware not only plays an important role in chemistry experiments, but also in other science fields as well. Therefore, it is used as the most appropriate material for producing different glassware in various shapes and sizes.

The present catalogue is presenting the produced glassware modules are manufactured in E.E.I. company, and the technical specifications are enclosed as well.

### Contents:

- Introduction . . . . . 1
- Types of Beakers . . . . . 3
- Centrifuge Tubes . . . . . 3
- Types of Stirring rods. . . . . 4
- Petri dishes. . . . . 4
- Hoffman Electrolysis Apparatus. . . . . 5
- Glass adaptor. . . . . 5
- Types of ground joints . . . . . 5
- Types of funnels. . . . . 6
- Alcohol burner. . . . . 7
- Types of U-shaped Tubes. . . . . 7
- Dessicator. . . . . 7
- Types of Pipettes . . . . . 8
- Types of connectors . . . . . 8
- Communicating Tubes. . . . . 9
- Watch Glass . . . . . 9
- Types of Bottles . . . . . 10
- Calcium Chloride tube . . . . . 10
- Types of flasks . . . . . 10
- Pycnometer. . . . . 15
- Connecting Tubes. . . . . 15
- Graduate Burette with valve. . . . . 15
- Graduated Cylinder (tall form). . . . . 15
- Types of Erlenmeyer flask . . . . . 16
- Apparatus for determination of melting point and boiling point (Thiele tube). . . . . 17
- Liquid convection tube. . . . . 17
- Soxhlet extractor. . . . . 17
- Types of Condensors . . . . . 18-19

**Educational Equipment Industries. Co., Ltd.**  
**Jalal St., Shahrak-e-Esteghlsl, Azadegan Highway**

**Tehran. Iran., P.O.Box: 13445-379**  
**Zip Code: 13897-96311**

**Tel: +98 21 44545481**  
**Fax: +98 21 44545488**

 **ft@eei-co.com**

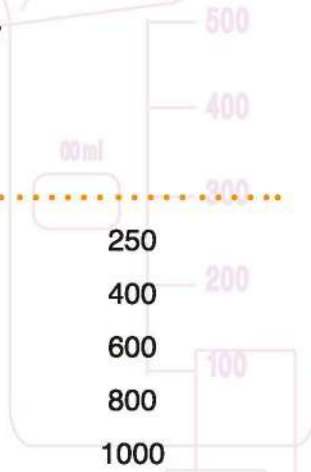
 **+98 935 969 0816**

**Laboratory Glassware Module**

**Tall-form Graduated Beaker**  
Borosilicate Glass

**Volume (ml):**

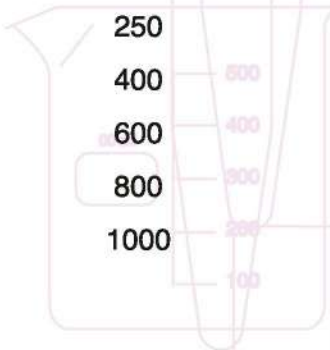
- 5
- 10
- 25
- 50
- 100
- 150



**Low-form Graduate Beaker**  
Borosilicate Glass

**Volume (ml):**

- 5
- 10
- 25
- 50
- 100
- 150

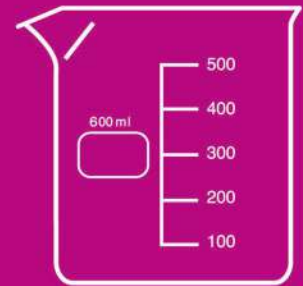
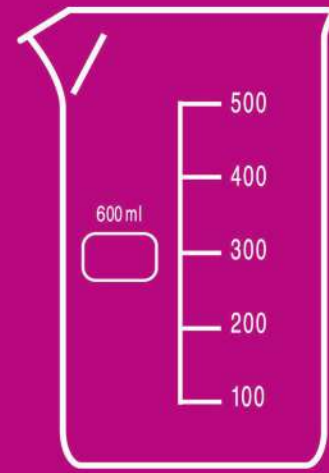
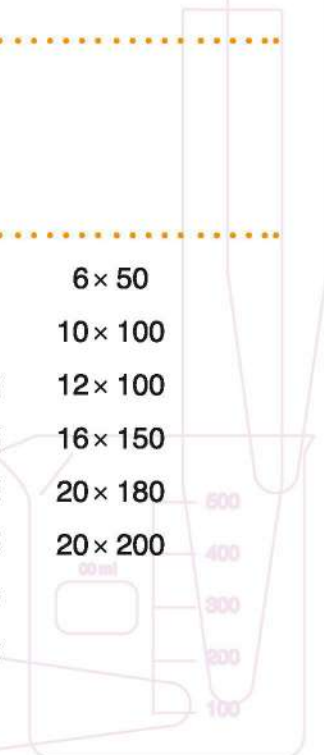


**Centrifuge tube**  
Borosilicate Glass

**Test tube**  
Borosilicate tube

**size (mm):**

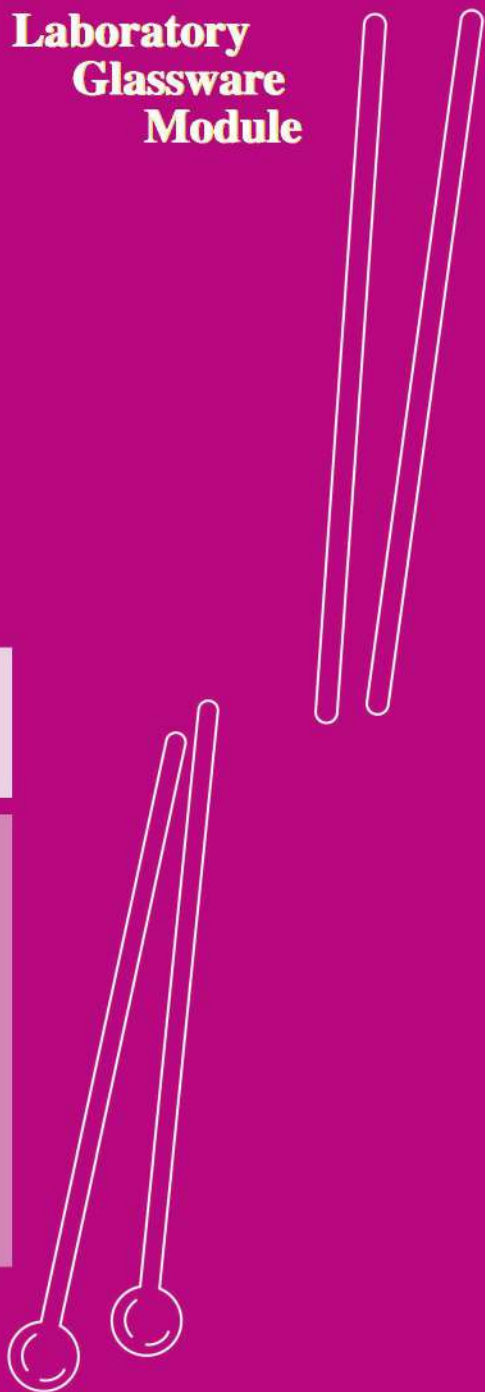
- |          |          |
|----------|----------|
| 10 × 75  | 6 × 50   |
| 12 × 75  | 10 × 100 |
| 16 × 100 | 12 × 100 |
| 16 × 125 | 16 × 150 |
| 18 × 150 | 20 × 180 |
| 20 × 150 | 20 × 200 |
| 24 × 150 |          |
| 25 × 150 |          |



# Laboratory Glassware Module

4

Laboratory Glassware Module



## Laboratory Glassware Module

### Stirring rod

Alkali silicate Glass

size (mm):

150 × 5

200 × 5

150 × 6

200 × 6

### Stirring rod with molten end

Alkali silicate Glass

size (mm):

150 × 5

200 × 5

150 × 6

200 × 6

### Petri dish

Alkali silicate Glass

size (mm):

20 × 10

Hoffman Electrolysis Apparatus

**EDUCATIONAL  
EQUIPMENT  
INDUSTRIES**

**Glass adaptor**

Alkali silicate Glass

**Abbreviated Symbols:**

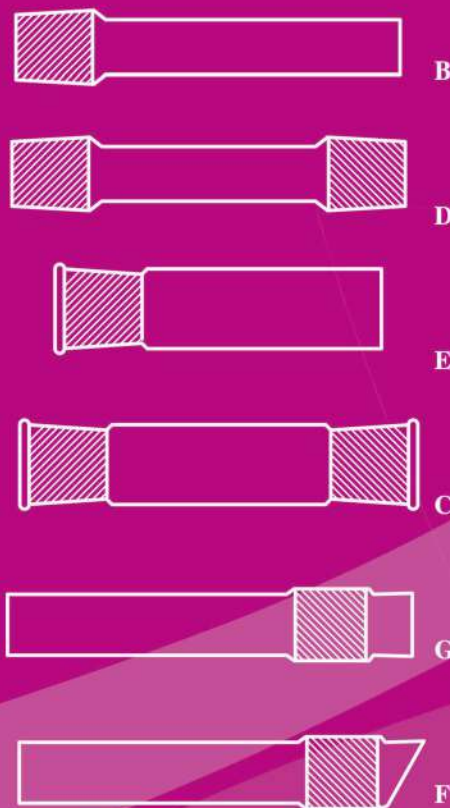
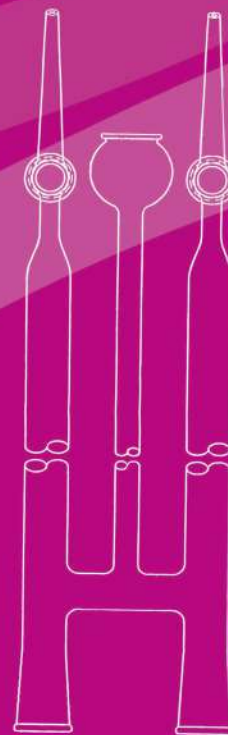
d 2	d 1	
2	6	D 6
3	8	D 8
5	11	D 11

**Various ground joints**

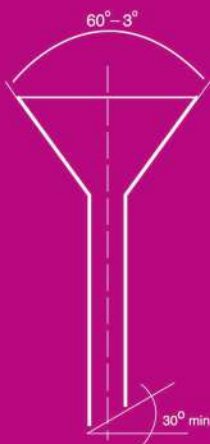
Borosilicate Glass

Size of ground joint (NS):

F	G	C	E	D	B
5/13	5/13	5/13	5/13	5/13	5/13
7/16	7/16	7/16	7/16	7/16	7/16
10/19	10/19	10/19	10/19	10/19	10/19
12/21	12/21	12/21	12/21	12/21	12/21
14/23	14/23	14/23	14/23	14/23	14/23
19/26	19/26	19/26	19/26	19/26	19/26
24/29	24/29	24/29	24/29	24/29	24/29
29/32	29/32	29/32	29/32	29/32	29/32
34/35	34/35	34/35	34/35	34/35	34/35
45/40	45/40	45/40	45/40	45/40	45/40
60/46	60/46	60/46	60/46	60/46	60/46
71/51	71/51	71/51	71/51	71/51	71/51
	85/55	85/55	85/55	85/55	85/55



# Laboratory Glassware Module



6

Laboratory Glassware Module

## Laboratory Glassware Module

### Cylindrical Separatory funnel

Borosilicate Glass

Volume (ml): NS number (thread number):

250

29/32

### Funnel

Borosilicate Glass

Diameter of mouth (mm):

5 ± 35

5 ± 55

5 ± 75

### Separatory funnel, with stopper

Borosilicate Glass

Volume (ml): NS number (thread number):

100

19/26

250

29/32

 **E.E.I.**

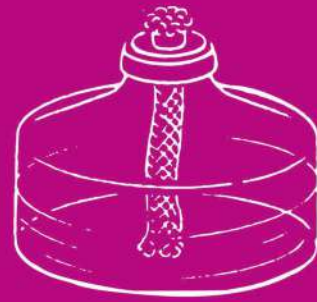
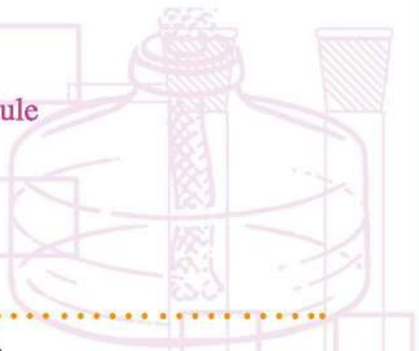
Laboratory Glassware Module

Alcohol burner

Borosilicate Glass

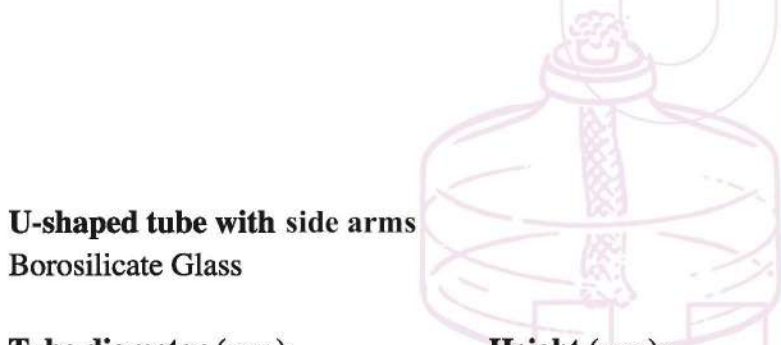
Volume (ml):

90



U-shaped tube without inlet/outlet

Borosilicate Glass



U-shaped tube with side arms

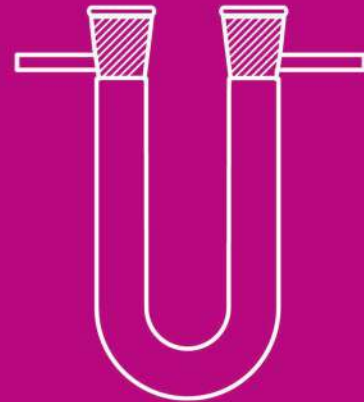
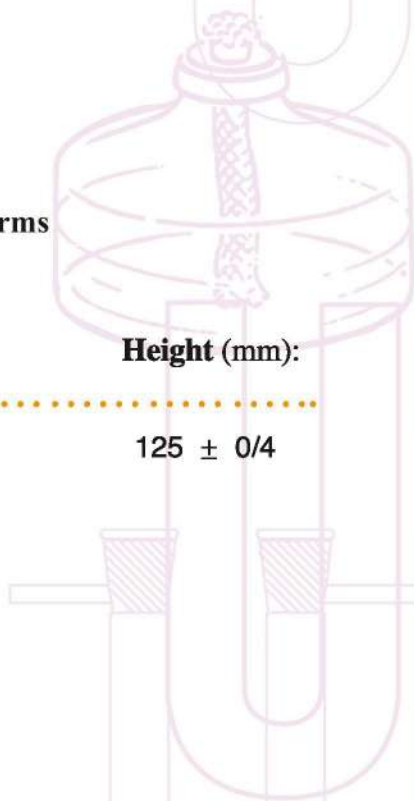
Borosilicate Glass

Tube diameter (mm):

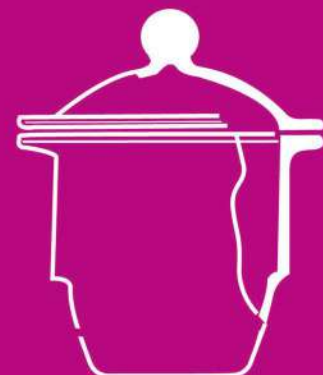
$15 \pm 0/4$

Height (mm):

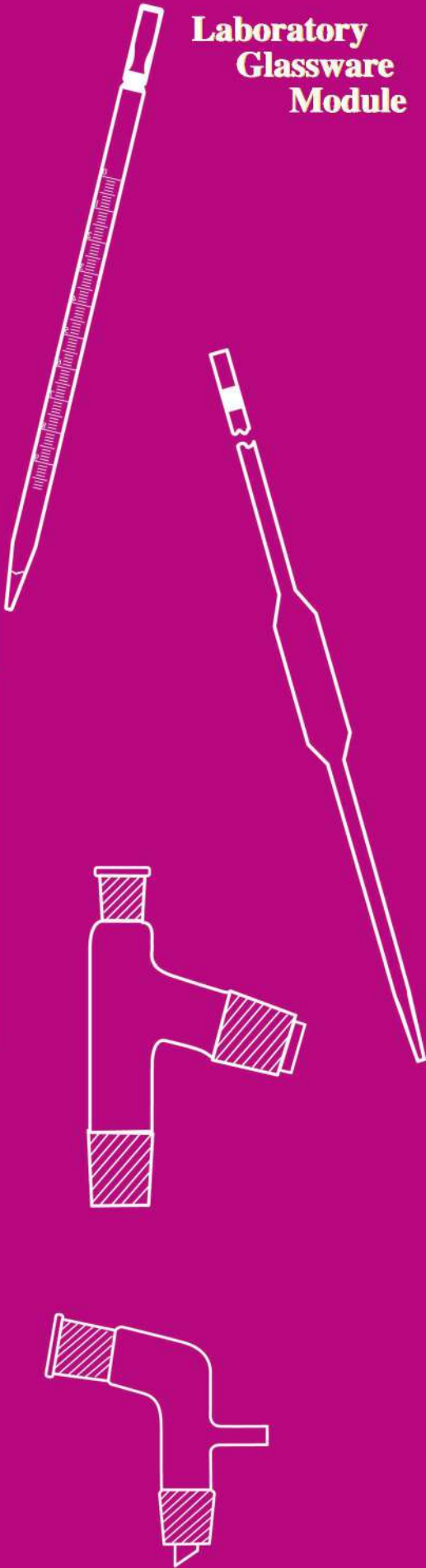
$125 \pm 0/4$



Desiccator



# Laboratory Glassware Module



## Laboratory Glassware Module

**Graduated Pipette**  
Borosilicate Glass

**Volume (ml):**

10

**Volumetric Pipette**  
Borosilicate Glass

**Volume (ml):**

10

20

**Still head adaptor**  
Borosilicate Glass

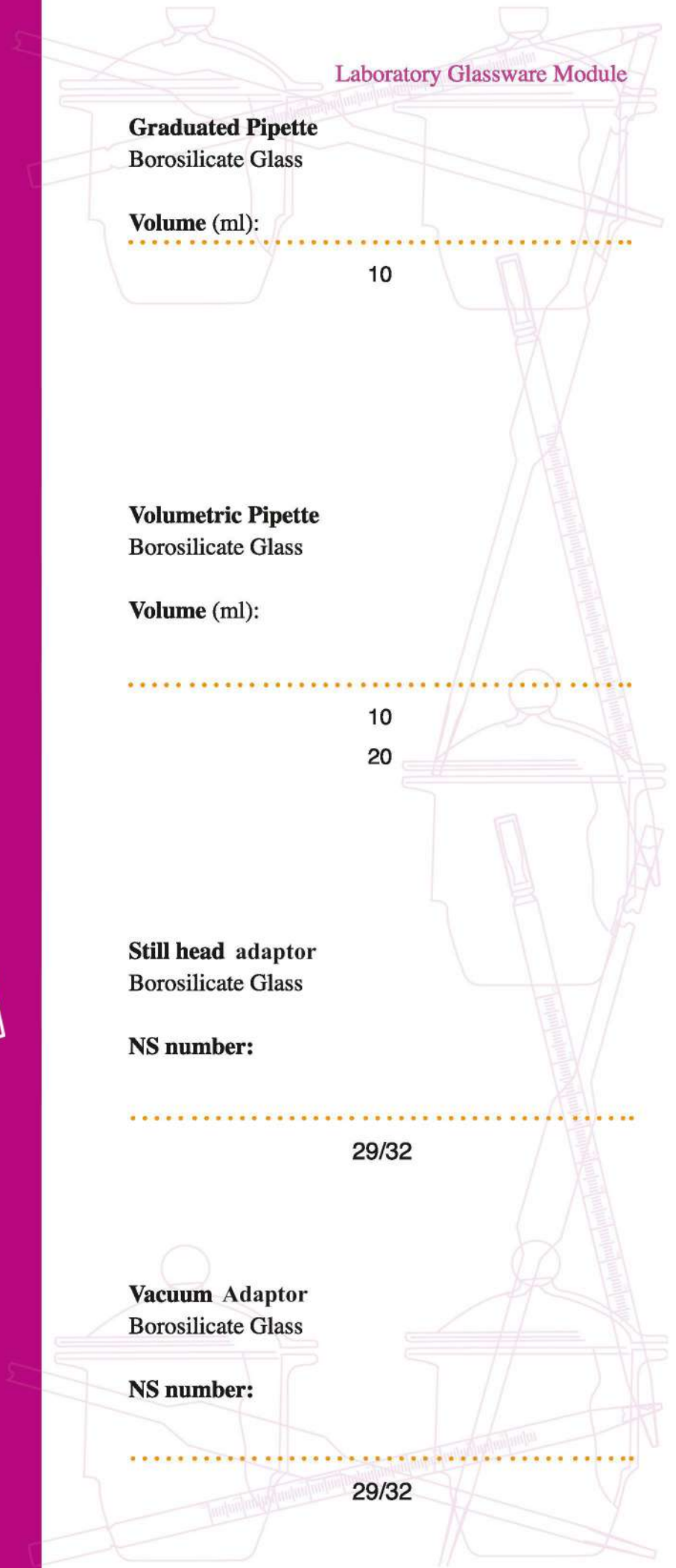
**NS number:**

29/32

**Vacuum Adaptor**  
Borosilicate Glass

**NS number:**

29/32





Laboratory Glassware Module

Claisen connecting tube

Borosilicate Glass

NS number: Diameter of necks (mm): Height(mm):

29/32

33

125



Communicating tubes

Approximate tube diameter (mm):

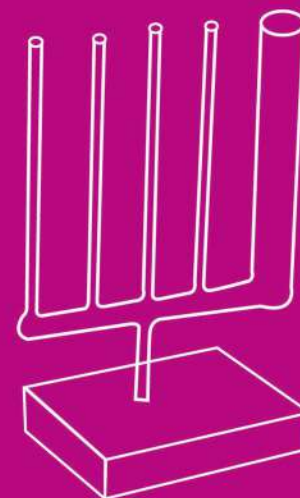
0/5

1

1/5

2/5

13



Communicating tubes  
(with different shapes)

Approximate tube diameter (mm):

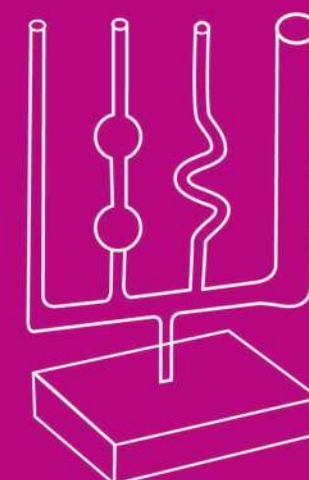
Watch glass

Alkali silicate glass

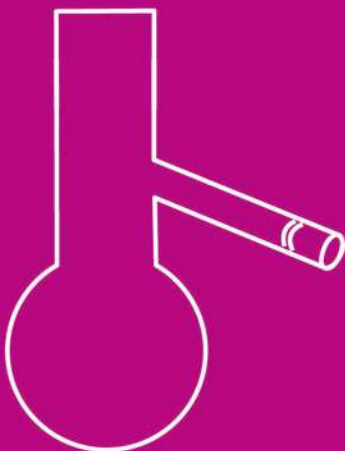
Mouth diameter (mm):

70

50



**Laboratory Glassware Module**



**Laboratory Glassware Module**

**Threaded-neck bottles with narrow mouth and glass stopper**

Tight mouth with glass lid

**Volume (ml):**

250

500

**Wide-mouthed jars with glass lid**

**Volume (ml):**

250

500

**Calcium Chloride tube**

**Overall length (mm):    Diameter of bubble (mm):**

150 ± 5

25 ± 2

**Distilling flask**

Borosilicate glass

**Volume (ml):**

250

## Laboratory Glassware Module

### Flat-bottom narrow-mouthed flask

Borosilicate glass

Volume (ml)	Diameter of bubble : (mm)	Overall length (mm)	Diameter of neck: (mm)
50	$51 \pm 1/8$	100	$22 \pm 1/1$
100	$64 \pm 2$	110	$22 \pm 1/1$
250	$85 \pm 2/6$	140	$34 \pm 1/5$



### Flat-bottom narrow-mouthed flask with threaded neck

Borosilicate glass

Volume (ml)	Diameter of bubble : (mm)	Overall length (mm)	Diameter of neck: (mm)	NS number: (mm)
50	$51 \pm 1/8$	100	$22 \pm 1/1$	14/23
				14/26
				29/32
100	$64 \pm 2$	110	$22 \pm 1/1$	14/23
				19/23
				29/32
250	$85 \pm 2/6$	140	$34 \pm 1/5$	29/32
				45/40

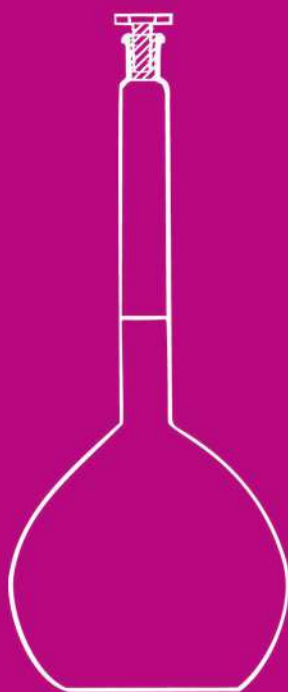


### Flat-bottom wide-mouthed flask

Borosilicate glass

Volume (ml)	Diameter of bubble : (mm)	Overall length (mm)	Diameter of neck: (mm)
50	$51 \pm 1/8$	100	$34 \pm 1/5$
100	$64 \pm 2$	110	$34 \pm 1/5$
250	$85 \pm 2/6$	140	$50 \pm 2$





### Round bottom, wide-mouthed flask with threaded neck Borosilicate glass

Volume (ml)	Diameter of bubble (mm)	Overall length (mm)	Diameter of neck (mm)	NS number (mm)
50	$51 \pm 1/8$	105	$34 \pm 1/5$	14/23
				14/26
				29/32
100	$64 \pm 2$	115	$34 \pm 1/5$	14/23
				19/23
				29/32
250	$85 \pm 2/6$	145	$50 \pm 2$	29/32
				29/32
				45/40

### Round bottom, narrow-mouthed flask with threaded neck Borosilicate glass

Volume (ml)	Diameter of bubble (mm)	Overall length (mm)	Diameter of neck (mm)	NS number (mm)
50	$51 \pm 1/8$	105	$22 \pm 1/1$	14/23
				19/26
				29/32
100	$64 \pm 2$	115	$22 \pm 1/1$	14/23
				19/23
				29/32
250	$85 \pm 2/6$	145	$34 \pm 1/5$	29/32
				29/32
				45/40

### Volumetric flask with stopper Borosilicate glass

Volume (ml):

50

100

**Double-necked round-bottom flask with threaded-neck**  
Borosilicate glass

Volume (ml)	Side NS number:	Middle NS number:
50	14/23	19/26
500	14/23	19/26
1000	14/23	19/26

**Round-bottom flask, with medium sized neck with threads**

Volume (ml)	Diameter of bubble : (mm)	Overall length (mm)	Diameter of mouth: (mm)
100	115	64	29/32
250	145	85	29/32

**EDUCATIONAL  
EQUIPMENT  
INDUSTRIES**

**Wide-mouthed round-bottom flask**  
Borosilicate glass

Volume (ml)	Diameter of bubble : (mm)	Overall length (mm)	Diameter of mouth: (mm)
50	51 ± 1/8	105	34 ± 1/5
100	64 ± 2	115	34 ± 1/5
250	85 ± 2/6	145	50 ± 2





## Laboratory Glassware Module

## Round bottom, Narrow-mouth flask

**Pycnometer**  
Borosilicate glass

**Volume (ml):**    **Overall length (mm):**    **Mass (g):**

Volume (ml)	Overall length (mm)	Mass (g)
10	30	25
25	40	30
50	50	40

**Kjeldahl flask**  
Borosilicate glass

**Graduate Burette with valve**  
Borosilicate glass

**Volume (ml):**

25

**Flat bottom, Wide-mouth flask with threaded**  
Borosilicate glassblowing

**Volume (ml):**

50

100

250

## Laboratory Glassware Module

### Pycnometer

Volume (ml):	Diameter of bubble(mm):	Overall length (mm):	Diameter of mouth(mm)
50	$51 \pm 1/8$	105	$22 \pm 1/1$
100	$64 \pm 2$	115	$22 \pm 1/1$
250	$85 \pm 2/6$	145	$34 \pm 1/5$

### Connecting tubes

#### Borosilicate glass

Volume (ml):	Diameter of bubble(mm):	Overall length (mm):	Diameter of mouth(mm)
50	$51 \pm 1/5$	$200 \pm 3$	$22 \pm 0/5$
100	$64 \pm 1/5$	$200 \pm 3$	$22 \pm 0/5$
250	$81 \pm 2$	$270 \pm 4$	$34 \pm 0/8$

### Graduated Burettes

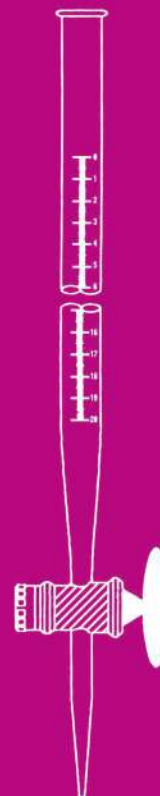
Capacity 25 ml

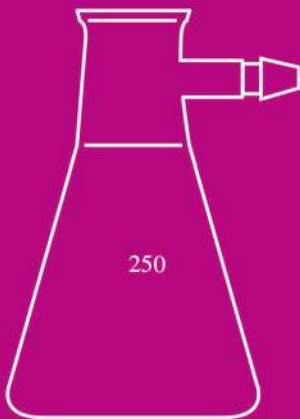
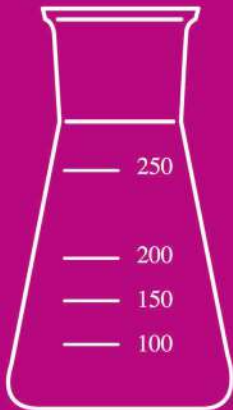
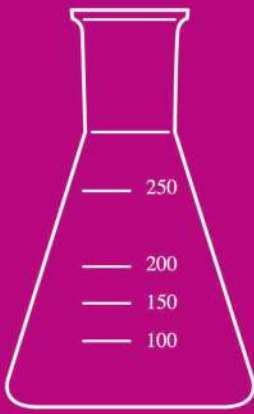
### Graduated cylinder

#### Borosilicate glass

Volume (ml):	Diameter of bubble(mm):	Diameter of mouth(mm):	Overall length (mm):	NS number:
50	$51 \pm 1/8$	$34 \pm 1/5$	100	14/23
				19/26
				29/32
100	$64 \pm 2$	$34 \pm 1/5$	110	14/23
				19/23
				29/32
250	$85 \pm 2/6$	$50 \pm 2$	140	29/32
				45/40

## Laboratory Glassware Module





Laboratory Glassware Module

**Narrow-mouthed Erlenmeyer**

Borosilicate glass

250

Volume (ml):



200

100

150

250

100

**Wide-mouthed Erlenmeyer**

Borosilicate glass

Volume (ml):



100

250

**Buchner flask (Vacuum flask)**

Borosilicate glass

Volume (ml):



100

250

**Narrow-mouthed Erlenmeyer with threaded neck**

Borosilicate glass

Volume (ml):

NS number:



14/23

19/26

29/32

29/32

45/40

100

250



**Laboratory Glassware Module**

**Apparatus for determination of melting point and boiling point (Thiele tube)**  
Borosilicate glass

**Liquid convection tube**  
Borosilicate glass

Volume (ml):	Width (mm):	Height (mm)
400	300	30

**Liquid convection tube**  
Borosilicate glass

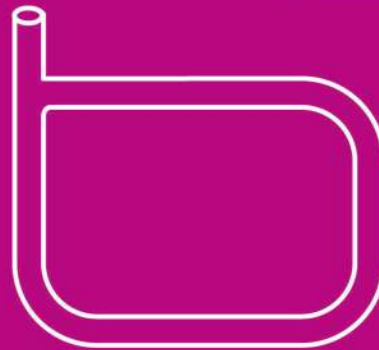
Volume (ml):	Diameter (mm):	Width (mm):	Height (mm):
50	16	140	100

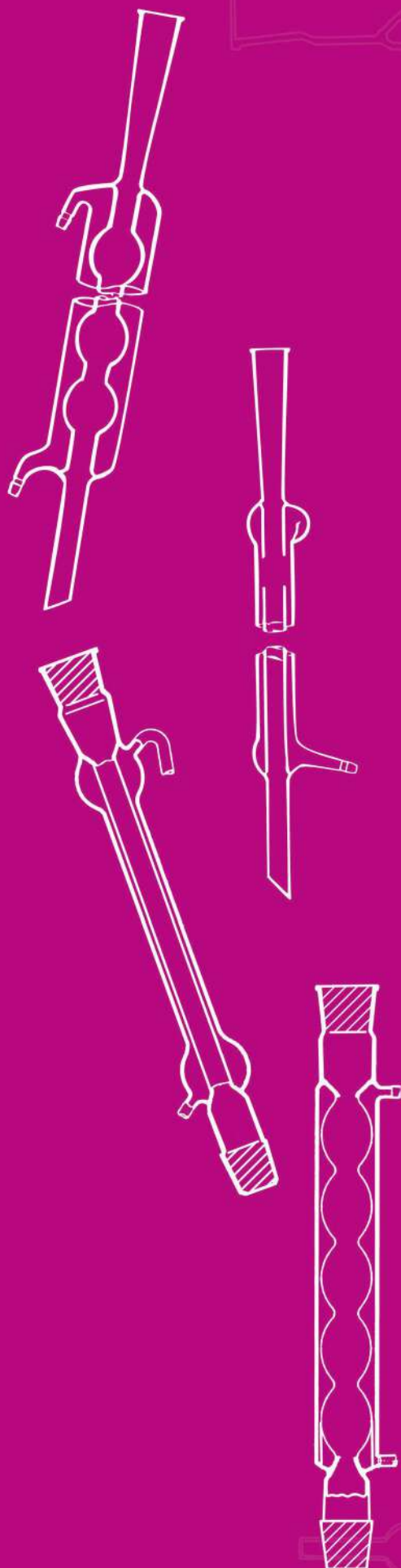
**Soxhlet extractor**  
Borosilicate glass

[info@eei-co.com](mailto:info@eei-co.com)  
[www.eei-co.com](http://www.eei-co.com)

 **E.E.I.**

**Laboratory Glassware Module**



**Allihn Condenser (without threaded neck)**

Borosilicate glass

**Abbreviated symbol:** **Overall length: (mm)**

k 160-19 235

k 250-29 340

**Simple condenser:**

Borosilicate glass

**Abbreviated symbol:** **Overall length(mm):**

L 160-19 225

L 250-29 325

**Simple condenser (with threaded neck)**

Borosilicate glass

**Abbreviated symbol:** **NS number :** **Overall length:**  
(thread number) (mm)

L 160-19 14/23 225

L 250-29 19/26 325

**Allihn Condenser (with threaded neck)**

Borosilicate glass

**Abbreviated symbol:** **NS number :** **Overall length:**  
(thread number) (mm)

k 160-19 19/26 235

k 250-29 29/32 340



**Graham Condenser** (without threaded neck)  
Borosilicate glass

**Abbreviated symbol:**

G 160-19

G 250-29

**Overall length:**

250

340



**Coiled Condenser** (with threaded neck)  
Borosilicate glass

**Abbreviated symbol:**

**NS number :**  
(thread number)

**Overall length:**  
(mm)

G 160-19

19/26

250

G 250-29

29/32

340

**Vigreux Column**  
Borosilicate glass

**Abbreviated symbol:**

**NS number**  
(thread number):

**Overall length:**  
(mm)

300

29/23

42

## Laboratory Glassware Module





# Laboratory Glassware Module



ISO 9001 CERTIFIED



Society of the Iranian  
Industries & Mines

**Educational Equipment Industries. Co.,  
Ltd. Jalal St., Shahrak-e-Esteghlsl,  
Azadegan Highway,  
Tehran. Iran., P.O.Box: 13445-379  
Zip Code: 13897-96311  
Tel: +98 21 44545481  
Fax: +98 21 44545488**

@ [ft@eei-co.com](mailto:ft@eei-co.com)

📞 +98 935 969 0816



[www.eei-co.com](http://www.eei-co.com)